

Colour in the scene from the book



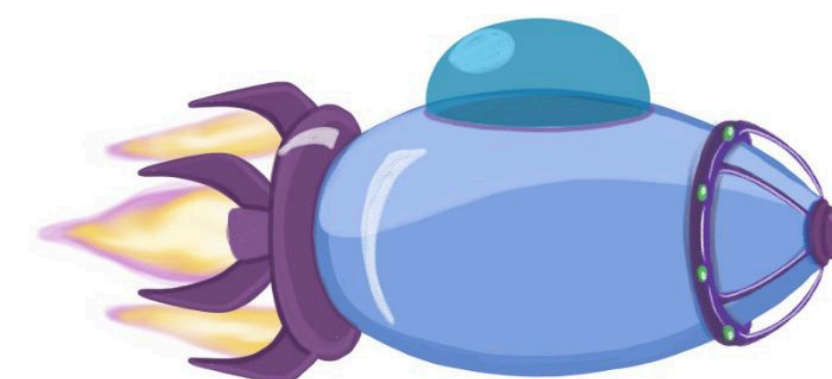
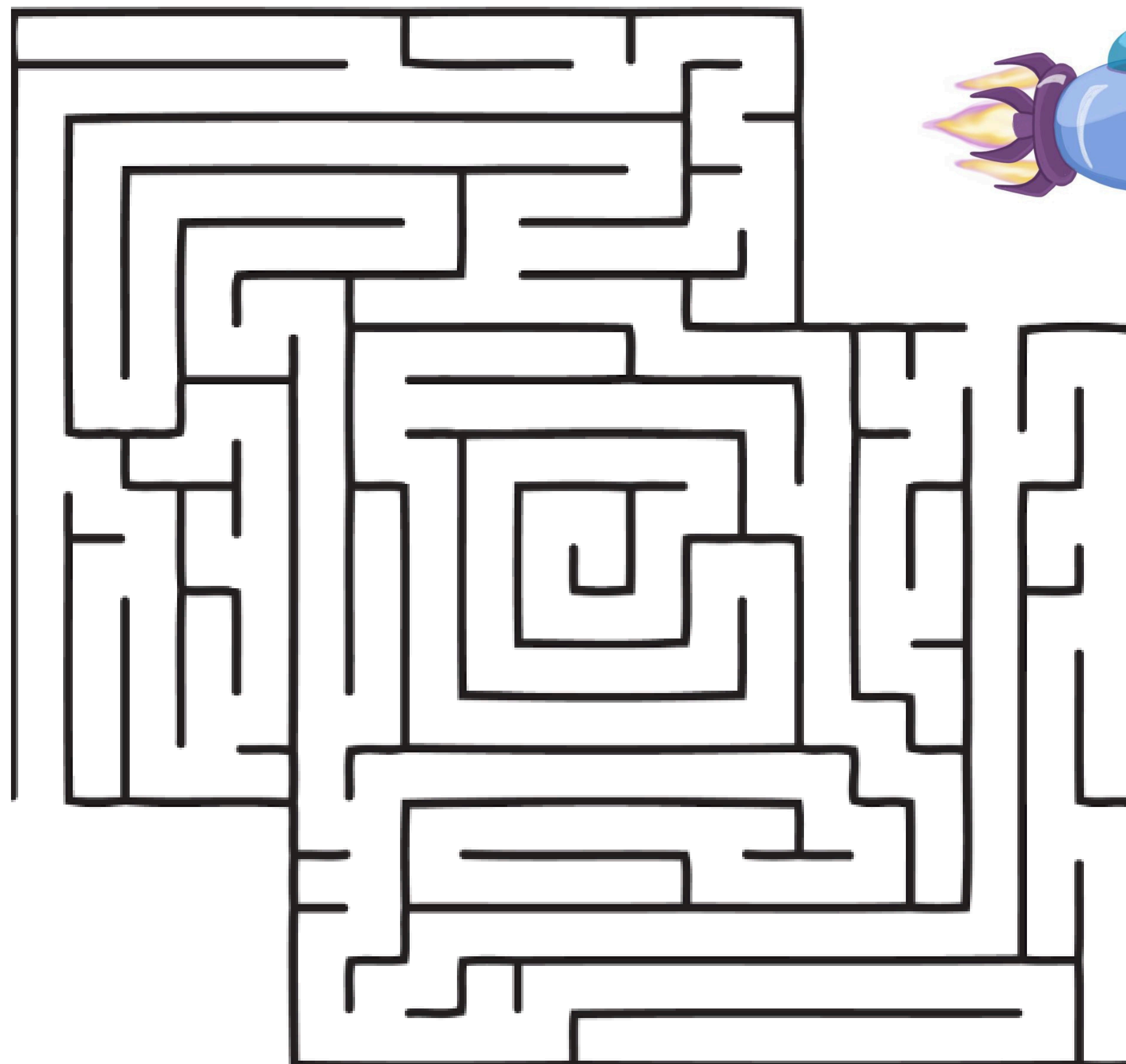
Daisy and Groob's Wordsearch

E F S F E F H B I G B E N U
C R I Z D B B E M A D H M G
B O O H A R R Y P O T T E R
B M S P I I I H U L Y G P O
S A Z T S D Q K C A S H A O
K N X L Y G A L I E N S C B
O B F L T E U D A R C A E N
T A C Q H S S E I L J N H N
S T O N E H E N G E G D I L
A H R O R A G G O A B C S B
N S T A K K M L H N E O T E
D I B E A S I A H A A O O H
P D E P Z X M N E T C K R T
C A S T L E N D E R H N Y S
G H A A I D E D F A N L A S
B A N A T I O N A L P A R K

Find the twelve hidden words
that appear in the book

GROOB
ENGLAND
ROMAN BATHS
STONEHENGE
HISTORY
BEACH
ALIENS
HARRY POTTER
BIG BEN
CASTLE
DAISY
NATIONAL PARK

Can you help Groob get back to her spaceship?





The Alphabet

Groob's spaceship has bumped into the alphabet and moved all the letters forward one place.
Can you use the previous letters to unscramble the locations?

Uif Mpoepo Fzf

Tupofifohf

Ibesjbo't Xbmm

The London Eye

Tdbgfmm Qjlf

Cvdljohibn Qbmbdf

Upxfs Csjehf
